



TO: HCHS/SOL Steering Committee and Project Managers

137 E. FRANKLIN STREET
SUITE 203
CAMPUS BOX 8030
CHAPEL HILL, NC 27599-8030

T 919.962.6971
F 919.962.3265
www.cscs.unc.edu

CC: Subcommittee Chairs, Reading Center Investigators

FROM: Marston Youngblood, HCHS Coordinating Center

DATE: August 21, 2009

RE: HCHS/SOL Management Report Recruitment Supplement, August 2009

Attached is the HCHS/SOL Management Report produced during the month of August, 2009. Since the Steering Committee decided during the July 29-30th meeting to extend recruitment to the end of June 2011, we are issuing an abbreviated report for this month to reflect this change in counting the month to month accrual of study participants. We have re-aligned the recruitment tables and figures so that a month of recruitment is now calendar based instead of being the elapsed time from the middle of one month to the next. The cut-off date for inclusion of data used in this report was July 31, 2009.

Recruitment— All of the tables and figures have been modified from previous versions to now reflect the start of recruitment as March 1, 2008 and extend the timeline for 39 months until June 30, 2011. The usual series of tables and figures that report on study recruitment have been updated to include information submitted by the cut-off date of July 31st. As of this report for the full month of July, 32,470 households have been screened, and 4,949 participants have been seen in the field centers for baseline examinations.

The tables summarizing information on household screening and baseline examination visits are ordered in the report in an alternating fashion so that the overall numbers are shown first for both screening protocols (HSR-A, HSR-B) prior to the table for the revised screening protocol (HSR-B). Each stage of screening can be compared using the most recent protocol (HSR-B) vs. the overall context. Version B of the Household Screening Roster Form (HSR-B) invokes the revised age sub-sampling algorithm. In this report, recruitment tables are provided based on all households screened and participants seen to date as well as for just those based on the HSR-B. Further, recruitment projections presented here assume that the alternate age sub-sampling algorithm will continue to be used for over-sampling of older adults through the planned end of recruitment (June 2011).

Table 1.4a— In the process of extending the end date for this table to June 30, 2011 we ‘froze’ the first year deficit counts at the historic date of June 30, 2009 so that reference point would not change. The ongoing deficit (or surplus) in participants is used to compute the expected number per month or per week in the final columns. The overall projected number needed per month as of July 31, 2009 was 500 or roughly 125 per week. The individual number per week on a center basis ranged from 28 to 35.

Figure 6— The figure is now extended to cover the additional 3 months of recruitment through June 2011. Two field centers are tracking well near the expected goal line to reach 4,000 participants and two of the centers will need to increase their rates of accrual in order to meet the goal.

HCHS/SOL Management Report, August 2009

Not for Publication or other Distribution

Table 1.1a Household Recruitment Screening Status by Center: Combined (HSRA/HSRB)

Result of Screening	Bronx (N=6593)		Chicago (N=9559)		Miami (N=6246)		San Diego (N=10072)		Overall (N=32470)	
	N	%	N	%	N	%	N	%	N	%
Households Finalized	6593		9559		6246		10072		32470	
Address not a household	415	6.3	948	9.9	380	6.1	560	5.6	2303	7.1
Unable to contact after repeated attempts	798	12.1	1188	12.4	436	7.0	512	5.1	2934	9.0
HH Contacted	5380	81.6	7423	77.7	5430	86.9	9000	89.4	27233	83.9
Households Contacted	5380		7423		5430		9000		27233	
HH refused to be screened	1003	18.6	470	6.3	869	16.0	600	6.7	2942	10.8
HH screening never completed, eligibility unknown	33	0.6	118	1.6	18	0.3	80	0.9	249	0.9
HH screening completed	4344	80.7	6835	92.1	4543	83.7	8320	92.4	24042	88.3
Households interviewed	4344		6835		4543		8320		24042	
HH not age/Hispanic eligible	1468	33.8	3741	54.7	1394	30.7	2396	28.8	8999	37.4
HH age/Hispanic eligible	2876	66.2	3094	45.3	3149	69.3	5924	71.2	15043	62.6
Households age/Hispanic eligible	2876	66.2	3094	45.3	3149	69.3	5924	71.2	15043	62.6
HH not selected age subsample	920	32.0	1225	39.6	855	27.2	2623	44.3	5623	37.4
HH selected age subsample	1956	68.0	1869	60.4	2294	72.9	3301	55.7	9420	62.6
Households selected	1956		1869		2294		3301		9420	
HH refused to participate	605	30.9	695	37.2	1293	56.4	639	19.4	3232	34.3
HH agreed to participate	1351	69.1	1174	62.8	1001	43.6	2662	80.6	6188	65.7
HH agreed to participate	1351		1174		1001		2662		6188	
HH with person screened	1312	97.1	1155	98.4	967	96.6	1502	56.4	4936	79.8
HH with no person screened	39	2.9	19	1.6	34	3.4	1160	43.6	1252	20.2

Based on analysis files created on August 12, 2009.

Note: Source files - SCT, HSRA, HSRB, ELE.

HCHS/SOL Management Report, August 2009

Not for Publication or other Distribution

Table 1.1b Household Recruitment Screening Status by Center: HSRB Overall

Result of Screening	Bronx (N=4804)		Chicago (N=5419)		Miami (N=3276)		San Diego (N=5258)		Overall (N=18757)	
	N	%	N	%	N	%	N	%	N	%
Households Finalized	4804		5419		3276		5258		18757	
Address not a household	308	6.4	11	0.2	78	2.4	299	5.7	696	3.7
Unable to contact after repeated attempts	601	12.5	8	0.2	18	0.6	319	6.1	946	5.0
HH Contacted	3895	81.1	5400	99.7	3180	97.1	4640	88.3	17115	91.3
Households Contacted	3895		5400		3180		4640		17115	
HH refused to be screened	815	20.9	8	0.2	327	10.3	345	7.4	1495	8.7
HH screening never completed, eligibility unknown	22	0.6	76	1.4	8	0.3	34	0.7	140	0.8
HH screening completed	3058	78.5	5316	98.4	2845	89.5	4261	91.8	15480	90.5
Households interviewed	3058		5316		2845		4261		15480	
HH not age/Hispanic eligible	1081	35.4	3064	57.6	965	33.9	1484	34.8	6594	42.6
HH age/Hispanic eligible	1977	64.7	2252	42.4	1880	66.1	2777	65.2	8886	57.4
Households age/Hispanic eligible	1977	64.7	2252	42.4	1880	66.1	2777	65.2	8886	57.4
HH not selected age subsample	383	19.4	703	31.2	319	17.0	599	21.6	2004	22.6
HH selected age subsample	1594	80.6	1549	68.8	1561	83.0	2178	78.4	6882	77.5
Households selected	1594		1549		1561		2178		6882	
HH refused to participate	510	32.0	580	37.4	989	63.4	440	20.2	2519	36.6
HH agreed to participate	1084	68.0	969	62.6	572	36.6	1738	79.8	4363	63.4
HH agreed to participate	1084		969		572		1738		4363	
HH with person screened	1061	97.9	956	98.7	556	97.2	824	47.4	3397	77.9
HH with no person screened	23	2.1	13	1.3	16	2.8	914	52.6	966	22.1

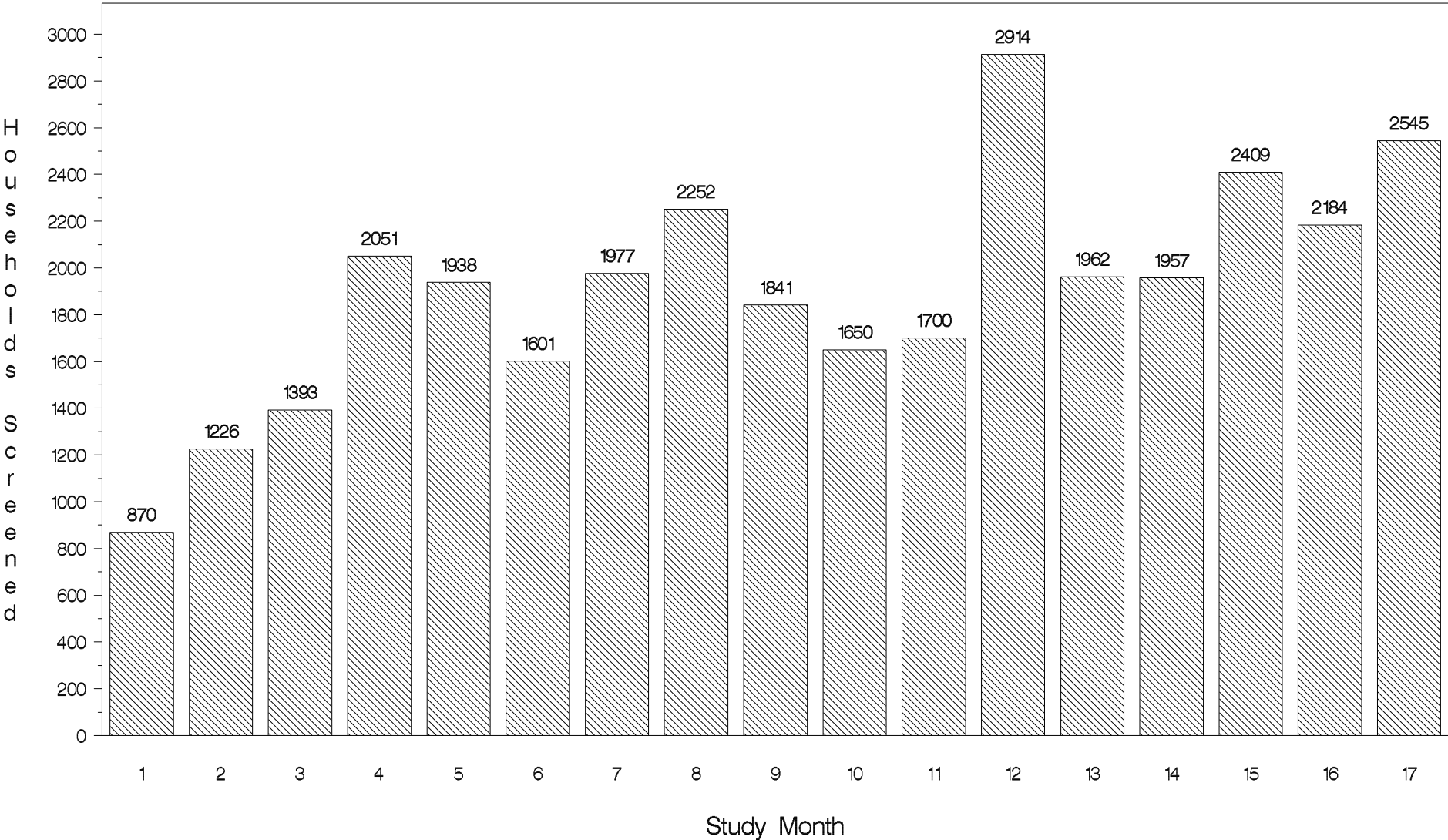
Based on analysis files created on August 12, 2009.

Note: Source files - SCT, HSRB, ELE.

*Households Selected are composed of: i. HH Ages 18-74 Selected (p<c) and ii. HH Ages 45-74 Only Selected (p>=c).

HCHS/SOL Management Report, August 2009
Not for Publication or other Distribution

Figure 1. Monthly Households Screened through July 31, 2009

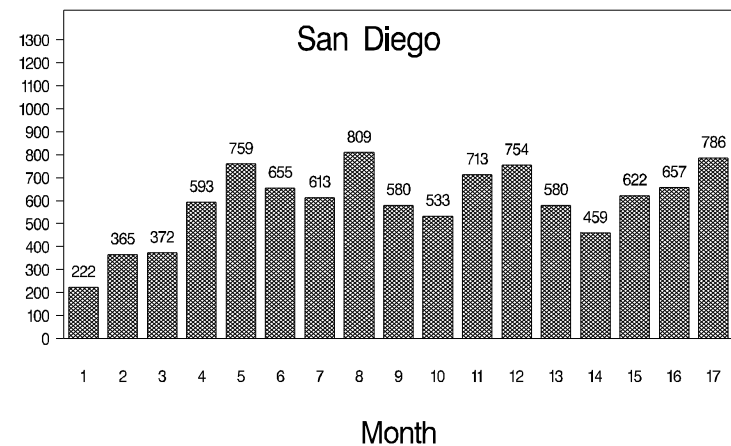
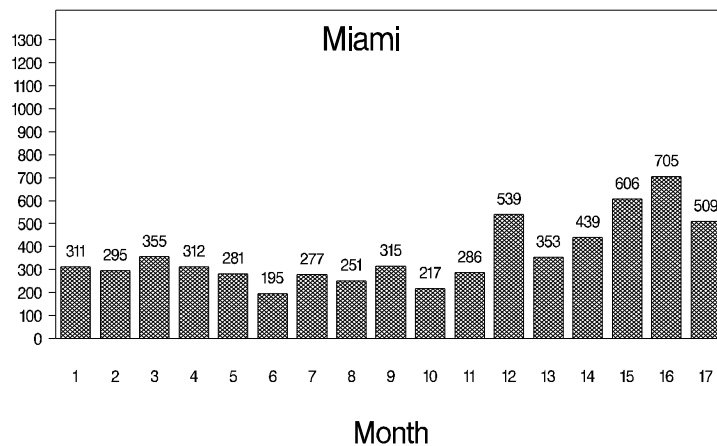
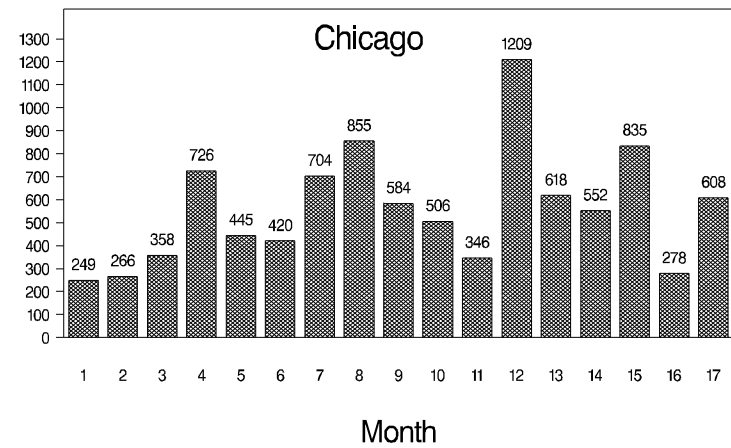
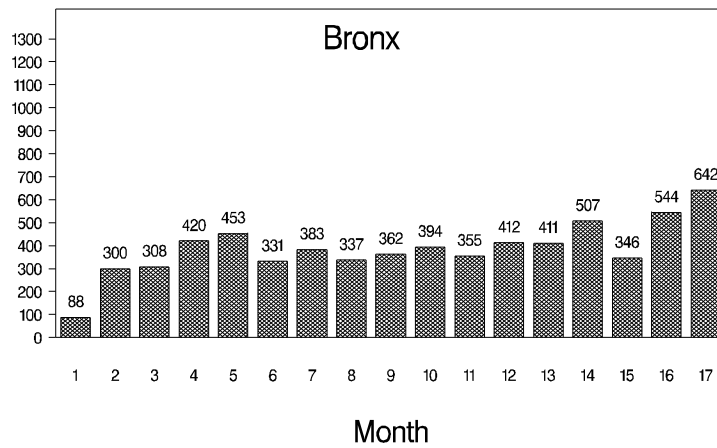


Based on analysis files created on August 12, 2009
Job HC012673 run by uccjal on 19AUG09 at 19:06

HCHS/SOL Management Report, August 2009

Not for Publication or other Distribution

Figure 2. Monthly Households Screened by Center and Month



HCHS/SOL Management Report, August 2009

Not for Publication or other Distribution

Table 1.2a Persons Screened Status and Visit Scheduling by Center: Combined (HSRA\HSRB)

Result of Screening	Bronx (N=2325)		Chicago (N=3333)		Miami (N=1965)		San Diego (N=2596)		Overall (N=10219)	
	N	%	N	%	N	%	N	%	N	%
Persons Screened for Eligibility	2317		3272		1934		2594		1E4	
Unable to Contact or Refused Screen	78	3.4	159	4.9	70	3.6	62	2.4	369	3.7
Completed Screen and Ineligible	5	0.2	26	0.8	10	0.5	0	0.0	41	0.4
Completed Screen and Eligible	2234	96.4	3087	94.4	1854	95.9	2532	97.6	9707	96.0
Eligible Persons	2234		3087		1854		2532		9707	
Eligible and refused Visit	128	5.7	778	25.2	213	11.5	300	11.9	1419	14.6
Eligible and agreed to Visit	2106	94.3	2309	74.8	1641	88.5	2232	88.2	8288	85.4
Agree to Visit	2106		2309		1641		2232		8288	
Appointment not Scheduled	17	0.8	26	1.1	19	1.2	0	0.0	62	0.8
Appointment Scheduled	2089	99.2	2283	98.9	1622	98.8	2232	100.0	8226	99.3
Scheduled Appointments	2089		2283		1622		2232		8226	
Attended Visit	1161	55.6	1382	60.5	908	56.0	1498	67.1	4949	60.2
Pending Clinic Visit	872	41.7	839	36.8	621	38.3	653	29.3	2985	36.3
Past due Clinic Visit	13	0.6	31	1.4	56	3.5	29	1.3	129	1.6

Based on analysis files created on August 12, 2009.

Note: Source files: ELE and visit forms. N in parenthesis is number of people screened for individual eligibility status.

HCHS/SOL Management Report, August 2009

Not for Publication or other Distribution

Table 1.2b Persons Screened Status and Visit Scheduling by Center: HSRB Only

Result of Screening	Bronx (N=1867)		Chicago (N=2853)		Miami (N=1170)		San Diego (N=1429)		Overall (N=7319)	
	N	%	N	%	N	%	N	%	N	%
Persons Screened for Eligibility	1860		2793		1147		1428		7228	
Unable to Contact or Refused Screen	44	2.4	123	4.4	16	1.4	0	0.0	183	2.5
Completed Screen and Ineligible	3	0.2	13	0.5	6	0.5	0	0.0	22	0.3
Completed Screen and Eligible	1813	97.5	2657	95.1	1125	98.1	1428	100.0	7023	97.2
Eligible Persons	1813		2657		1125		1428		7023	
Eligible and refused Visit	93	5.1	608	22.9	114	10.1	0	0.0	815	11.6
Eligible and agreed to Visit	1720	94.9	2049	77.1	1011	89.9	1428	100.0	6208	88.4
Agree to Visit	1720		2049		1011		1428		6208	
Appointment not Scheduled	13	0.8	24	1.2	8	0.8	0	0.0	45	0.7
Appointment Scheduled	1707	99.2	2025	98.8	1003	99.2	1428	100.0	6163	99.3
Scheduled Appointments	1707		2025		1003		1428		6163	
Attended Visit	914	53.5	1175	58.0	515	51.4	921	64.5	3525	57.2
Pending Clinic Visit	739	43.3	788	38.9	404	40.3	425	29.8	2356	38.2
Past due Clinic Visit	13	0.8	31	1.5	47	4.7	29	2.0	120	2.0

Based on analysis files created on August 12, 2009.

Note: Source files: ELE and visit forms. N in parenthesis is number of people screened for individual eligibility status.

HCHS/SOL Management Report, August 2009

Not for Publication or other Distribution

Table 1.3a Clinic Visit Participant Demographic Distribution by Center: Overall

Baseline Characteristic	Bronx (N=1161)		Chicago (N=1382)		Miami (N=908)		San Diego (N=1498)		Overall (N=4949)	
	N	%	N	%	N	%	N	%	N	%
Age Distribution										
Clinic Participants Ages 18-44	438	37.7	685	49.6	301	33.2	574	38.3	1998	40.4
Clinic Participants Ages 45+	686	59.1	656	47.5	582	64.1	880	58.7	2804	56.7
Hispanic/Latino Heritage										
Central American	85	7.3	128	9.3	292	32.2	26	1.7	531	10.7
Cuban	11	1.0	11	0.8	391	43.1	2	0.1	415	8.4
Mexican	44	3.8	796	57.6	17	1.9	1387	92.6	2244	45.3
Puerto Rican	581	50.0	274	19.8	18	2.0	13	0.9	886	17.9
Dominican	314	27.1	5	0.4	15	1.7	0	0.0	334	6.8
South American	47	4.1	131	9.5	131	14.4	9	0.6	318	6.4
More than one heritage	35	3.0	27	2.0	19	2.1	19	1.3	100	2.0
Other*	33	2.8	4	0.3	14	1.5	22	1.5	73	1.5
Education (SES surrogate)										
Less than High School Education	495	42.6	600	43.4	227	25.0	500	33.4	1822	36.8
High School Education or Higher	641	55.2	727	52.6	639	70.4	914	61.0	2921	59.0
Gender										
Female	704	60.6	773	55.9	520	57.3	996	66.5	2993	60.5
Male	457	39.4	609	44.1	388	42.7	501	33.4	1955	39.5

*Note: Other Hispanic / Latino heritage includes Spain.

Based on analysis files created on August 12, 2009.

Note: Source files: PIE.

HCHS/SOL Management Report, August 2009

Not for Publication or other Distribution

Table 1.3a (cont.) Clinic Visit Participant Demographic Distribution by Center: Overall

Baseline Characteristic	Bronx (N=1161)		Chicago (N=1382)		Miami (N=908)		San Diego (N=1498)		Overall (N=4949)	
	N	%	N	%	N	%	N	%	N	%
Age by Gender Distribution										
Clinic Participants Ages 18-44										
Female	259	59.1	357	52.1	162	53.8	375	65.3	1153	57.7
Male	179	40.9	328	47.9	139	46.2	198	34.5	844	42.2
Clinic Participants Ages 45+										
Female	422	61.5	395	60.2	346	59.5	592	67.3	1755	62.6
Male	264	38.5	261	39.8	236	40.6	288	32.7	1049	37.4

*Note: Other Hispanic / Latino heritage includes Spain.

Based on analysis files created on August 12, 2009.

Note: Source files: PIE.

HCHS/SOL Management Report, August 2009

Not for Publication or other Distribution

Table 1.3b Clinic Visit Participant Demographic Distribution by Center: HSRB Only

Baseline Characteristic	Bronx (N=914)		Chicago (N=1175)		Miami (N=515)		San Diego (N=921)		Overall (N=3525)	
	N	%	N	%	N	%	N	%	N	%
Age Distribution										
a. Clinic Participants Ages 18-44	362	39.6	590	50.2	163	31.7	409	44.4	1524	43.2
b. Clinic Participants Ages 45+	520	56.9	550	46.8	341	66.2	489	53.1	1900	53.9
Hispanic/Latino Heritage										
a. Central American	66	7.2	114	9.7	111	21.6	17	1.9	308	8.7
b. Cuban	10	1.1	8	0.7	269	52.2	0	0.0	287	8.1
c. Mexican	41	4.5	696	59.2	1	0.2	857	93.1	1595	45.3
d. Puerto Rican	466	51.0	201	17.1	7	1.4	6	0.7	680	19.3
e. Dominican	33	3.6	0	0.0	0	0.0	0	0.0	33	0.9
f. South American	40	4.4	120	10.2	95	18.5	8	0.9	263	7.5
g. More than one heritage	26	2.8	21	1.8	11	2.1	14	1.5	72	2.0
h. Other*	11	1.2	4	0.3	7	1.4	12	1.3	34	1.0
Education (SES surrogate)										
a. Less than High School Education	434	47.5	548	46.6	120	23.3	356	38.7	1458	41.4
b. High School Education or Higher	464	50.8	584	49.7	384	74.6	547	59.4	1979	56.1
Gender										
a. Female	551	60.3	646	55.0	294	57.1	592	64.3	2083	59.1
b. Male	363	39.7	529	45.0	221	42.9	328	35.6	1441	40.9

*Note: Other Hispanic / Latino heritage includes Spain.

Based on analysis files created on August 12, 2009.

Note: Source files: PIE.

HCHS/SOL Management Report, August 2009

Not for Publication or other Distribution

Table 1.3b (cont.) Clinic Visit Participant Demographic Distribution by Center: HSRB Only

Baseline Characteristic	Bronx (N=914)		Chicago (N=1175)		Miami (N=515)		San Diego (N=921)		Overall (N=3525)	
	N	%	N	%	N	%	N	%	N	%
Age by Gender Distribution										
Clinic Participants Ages 18-44										
a. Female	217	59.9	298	50.5	87	53.4	264	64.6	866	56.8
b. Male	145	40.1	292	49.5	76	46.6	144	35.2	657	43.1
Clinic Participants Ages 45+										
a. Female	315	60.6	328	59.6	200	58.7	314	64.2	1157	60.9
b. Male	205	39.4	222	40.4	141	41.4	175	35.8	743	39.1

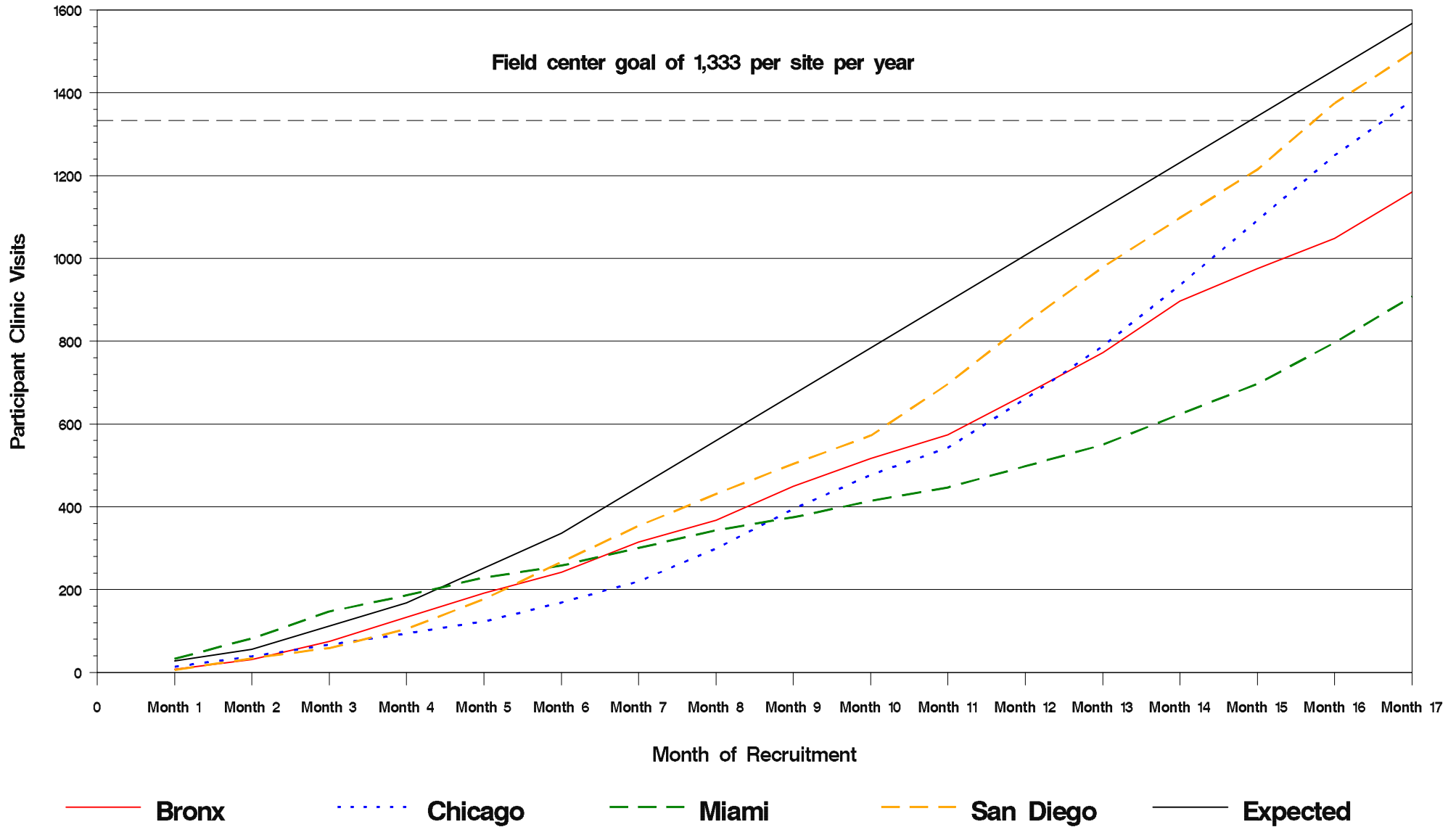
*Note: Other Hispanic / Latino heritage includes Spain.

Based on analysis files created on August 12, 2009.

Note: Source files: PIE.

HCHS/SOL Management Report, August 2009

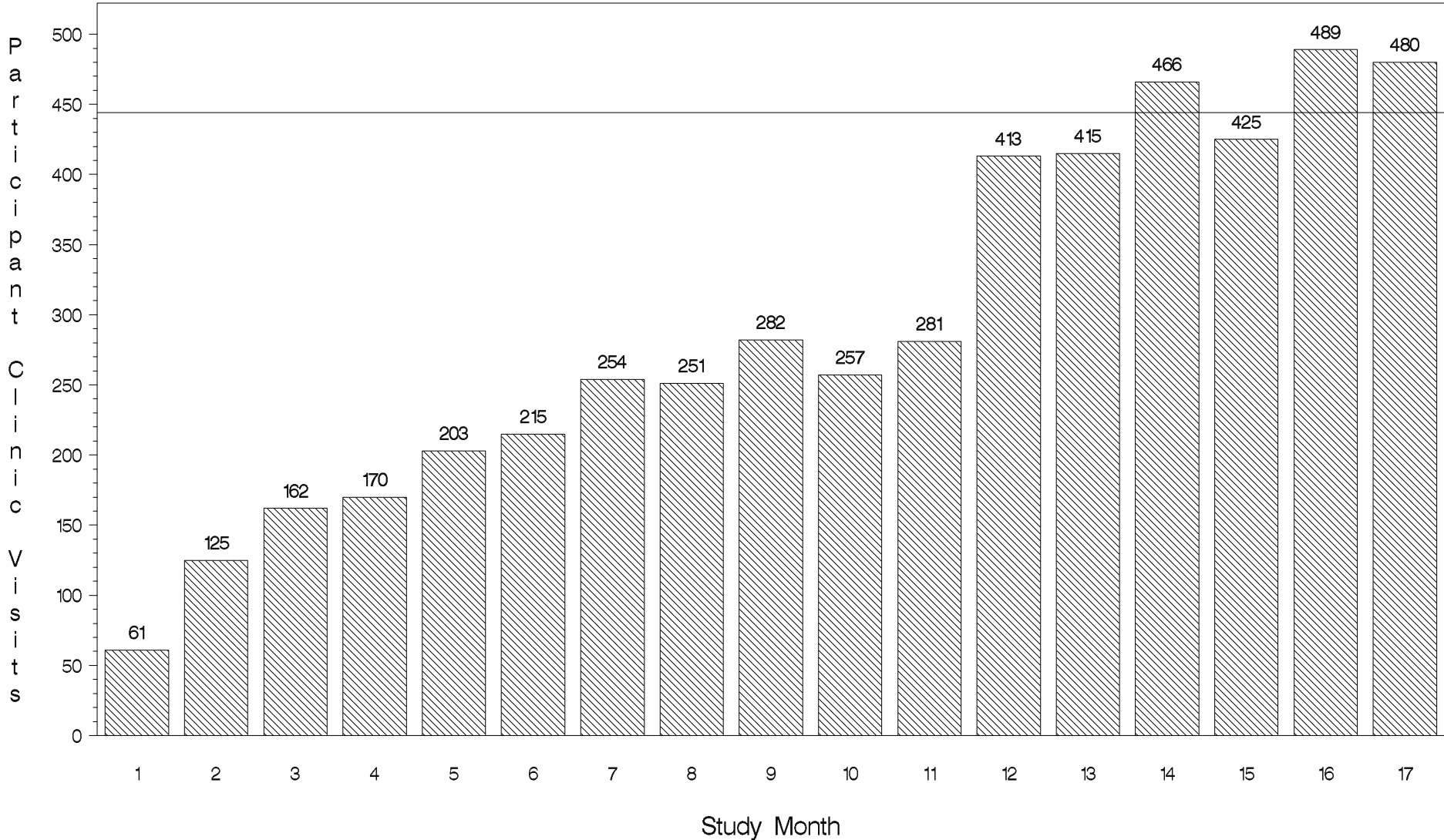
Figure 3. Monthly Participant Accrual by Center



Based on analysis files created on August 12, 2009

HCHS/SOL Management Report, August 2009
Not for Publication or other Distribution

Figure 4. Monthly Participant Clinic Visits through July 31, 2009

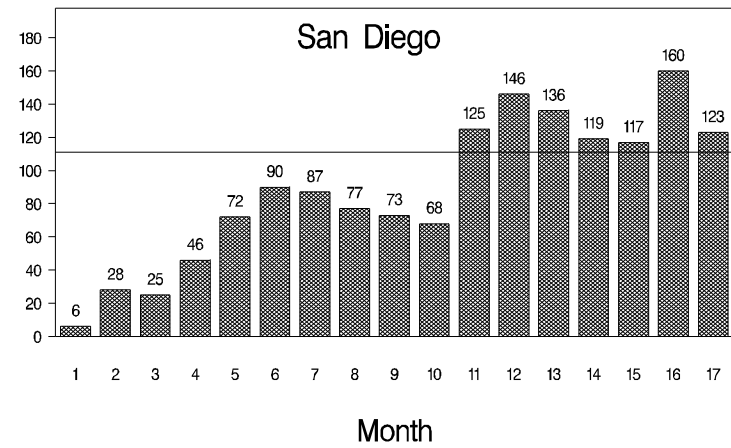
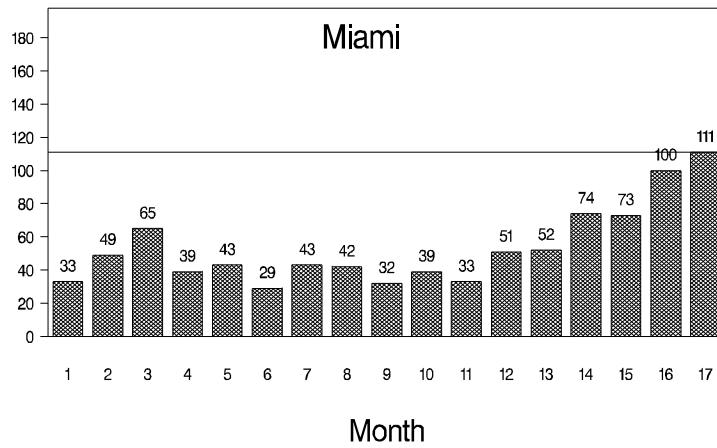
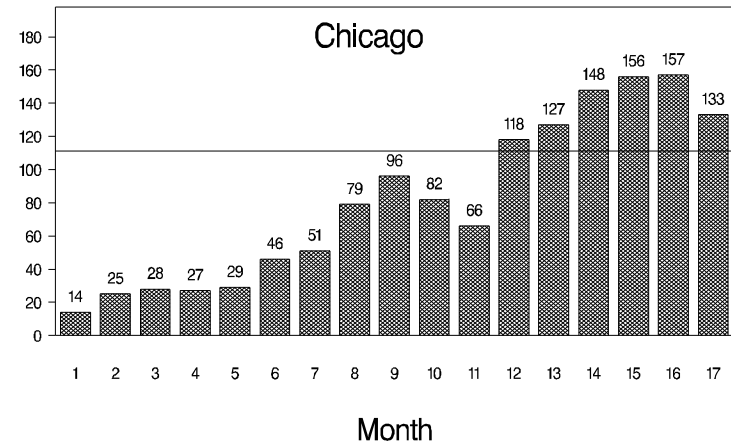
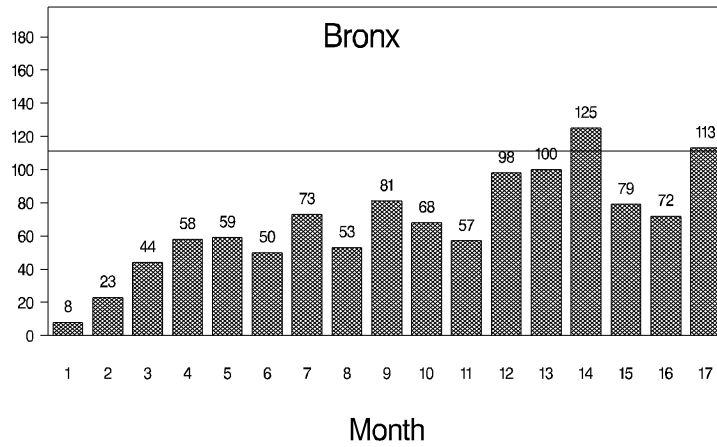


Note: Current Monthly Goal is 444 per Month
Based on analysis files created on August 12, 2009
Job HC012676 run by uccjal on 19AUG09 at 18:58

HCHS/SOL Management Report, August 2009

Not for Publication or other Distribution

Figure 5. Monthly Participant Clinic Visits by Center and Month



HCHS/SOL Management Report, August 2009

Not for Publication or other Distribution

Table 1.4a Monthly Participant Accrual Projections by Field Center through June 30, 2009

Center	Monthly Average to Date	Last 3 Month Average	Last 3 Month Weekly Rate	Last Month Actual	First Year Deficit ⁽¹⁾	Number ⁽²⁾ Needed per Month by 6/11	Number ⁽²⁾ Needed per Week by 6/11
Bronx	69	88	22	113	287	127	32
Chicago	82	149	38	133	86	117	30
Miami	54	95	24	111	538	139	35
San Diego	89	134	34	123	-40	111	28
Overall	73	117	30	480	871	500	125

1) Original goal per center=1,333 in 12 months approximately 111 participants/ month or approximately 28 participants/ week> The cumulative first year deficit is 1333-actual # of participants seen by June 30, 2009.

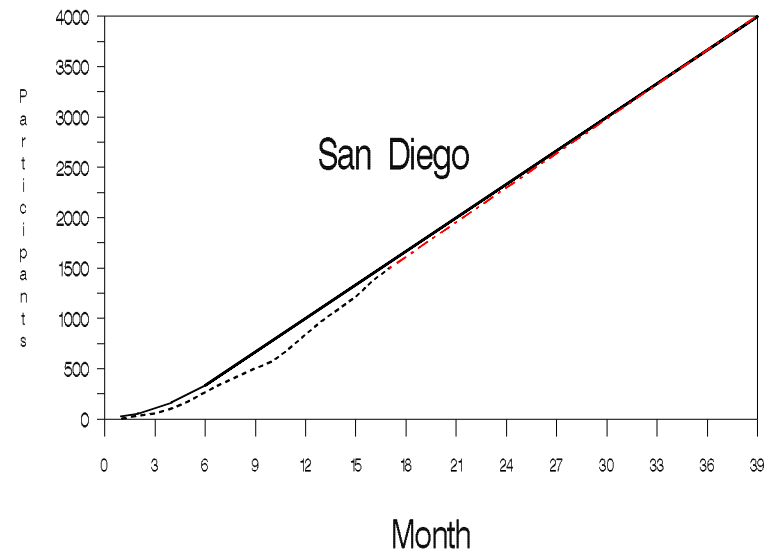
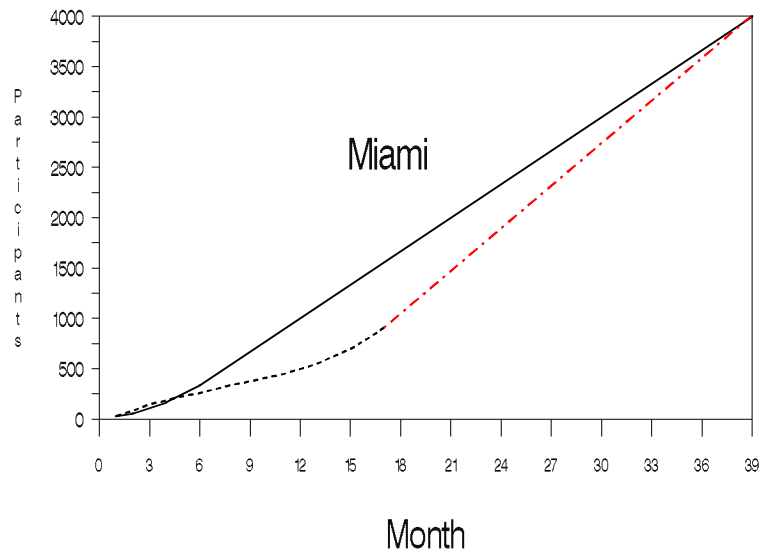
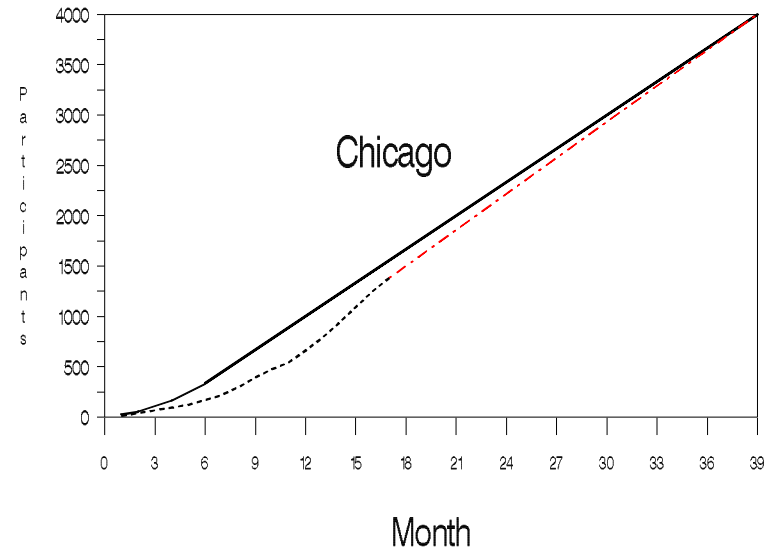
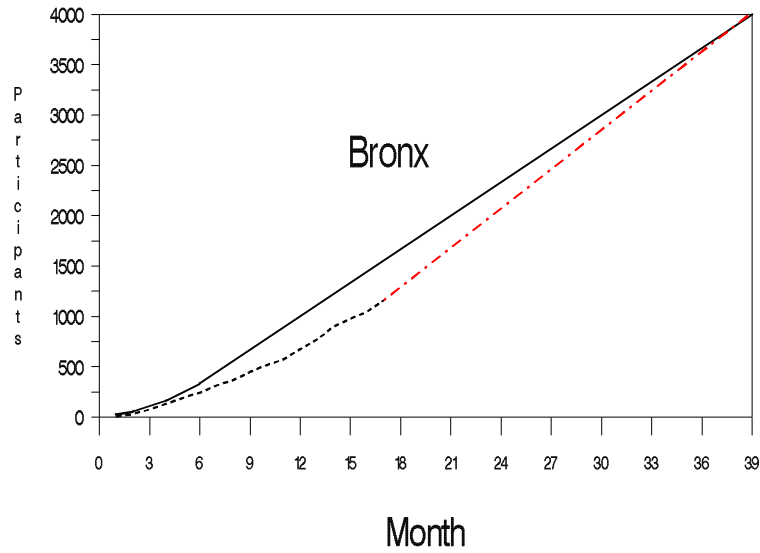
2) Number needed per month or week in order to complete recruitment by June 30, 2011.

Based on analysis files created on August 12, 2009.

HCHS/SOL Management Report, August 2009

Not for Publication or other Distribution

Figure 6. Cumulative Participant Accrual Projections through June 2011 by Field Center



--- Actual ————— Goal - . - . Projected

HCHS/SOL Management Report, August 2009

Not for Publication or other Distribution

Table 1.5 Time Since Scheduled Appointment by Pending/Past Due Clinic Visits

Time from Initial Contact	Pending Clinic Visit (N=2898)		Past Due Clinic Visit (N=129)	
	N	%	N	%
0-7 Days	907	31.3	0	0.0
8-14 Days	746	25.7	0	0.0
15-21 Days	492	17.0	18	14.0
22-28 Days	252	8.7	25	19.4
More than 28 Days	501	17.3	86	66.7

Based on analysis files created on August 12, 2009.

HCHS/SOL Management Report, August 2009

Not for Publication or other Distribution

Table 1.5a - Time Since Scheduled Appointment by Pending/Past Due Clinic Visits per center

Center	Time from Initial Contact	Pending Clinic Visit (N=2898)		Past Due Clinic Visit (N=129)	
		N	%	N	%
Bronx	Overall	849	29.3	13	10.1
	0-7 Days	165	5.7	0	0.0
	8-14 Days	163	5.6	0	0.0
	15-21 Days	165	5.7	0	0.0
	22-28 Days	95	3.3	3	2.3
	More than 28 Days	261	9.0	10	7.8
Chicago	Overall	833	28.7	31	24.0
	0-7 Days	227	7.8	0	0.0
	8-14 Days	269	9.3	0	0.0
	15-21 Days	165	5.7	7	5.4
	22-28 Days	66	2.3	5	3.9
	More than 28 Days	106	3.7	19	14.7
Miami	Overall	569	19.6	56	43.4
	0-7 Days	237	8.2	0	0.0
	8-14 Days	139	4.8	0	0.0
	15-21 Days	84	2.9	0	0.0
	22-28 Days	40	1.4	2	1.6
	More than 28 Days	69	2.4	54	41.9

Based on analysis files created on August 12, 2009.

HCHS/SOL Management Report, August 2009

Not for Publication or other Distribution

Table 1.5a - Time Since Scheduled Appointment by Pending/Past Due Clinic Visits per center

Center	Time from Initial Contact	Pending Clinic Visit (N=2898)		Past Due Clinic Visit (N=129)	
		N	%	N	%
San Diego	Overall	647	22.3	29	22.5
	0-7 Days	278	9.6	0	0.0
	8-14 Days	175	6.0	0	0.0
	15-21 Days	78	2.7	11	8.5
	22-28 Days	51	1.8	15	11.6
	More than 28 Days	65	2.2	3	2.3

Based on analysis files created on August 12, 2009.